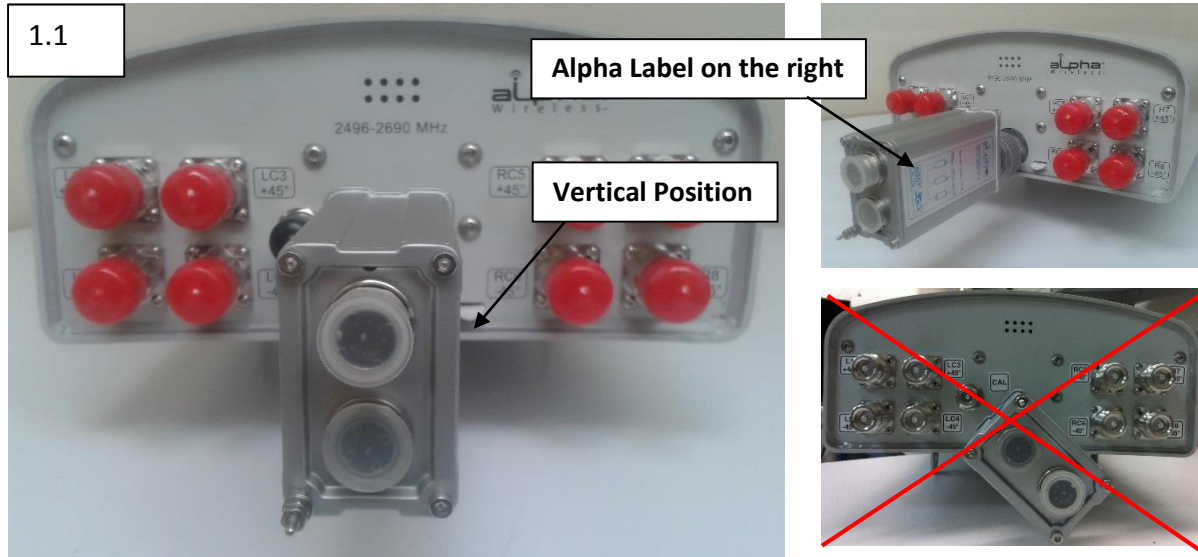


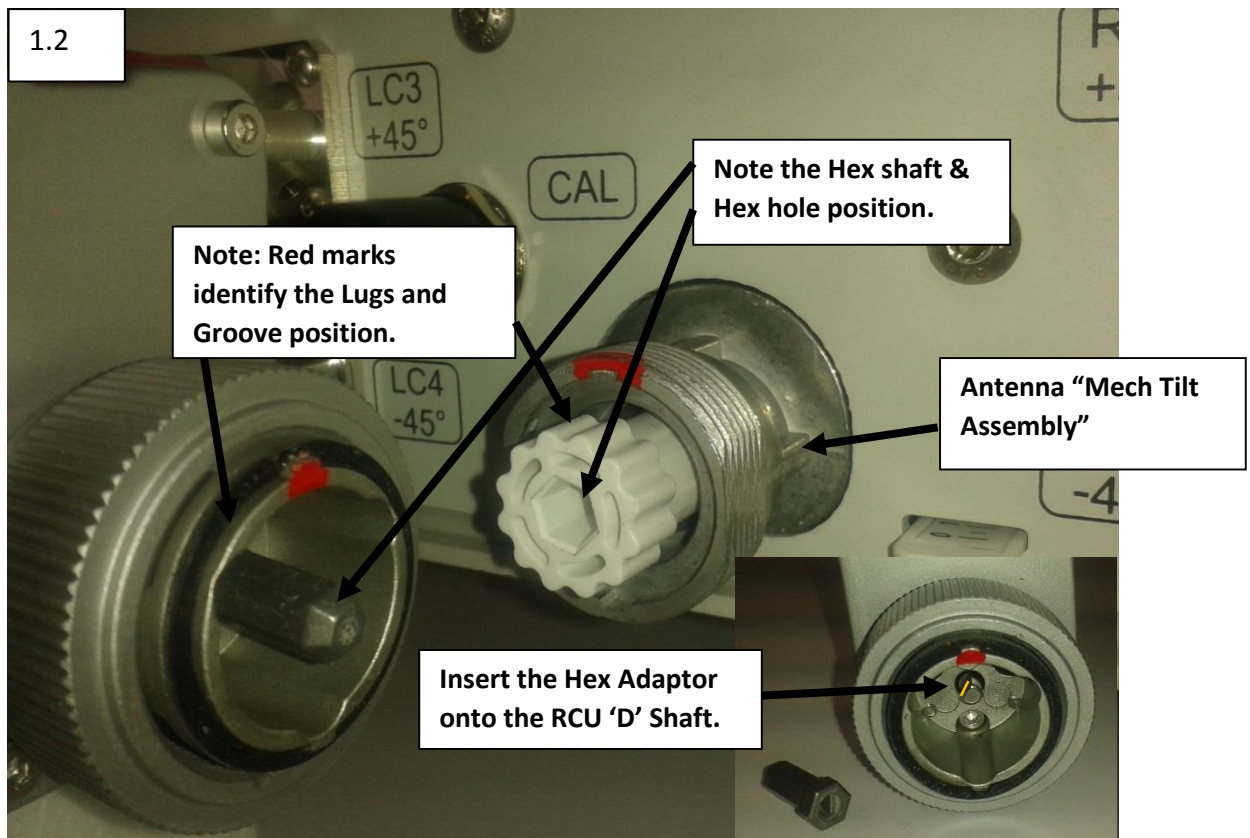
RCU Installation Instructions

1. Attach External RCU in following way to ensure correct installation

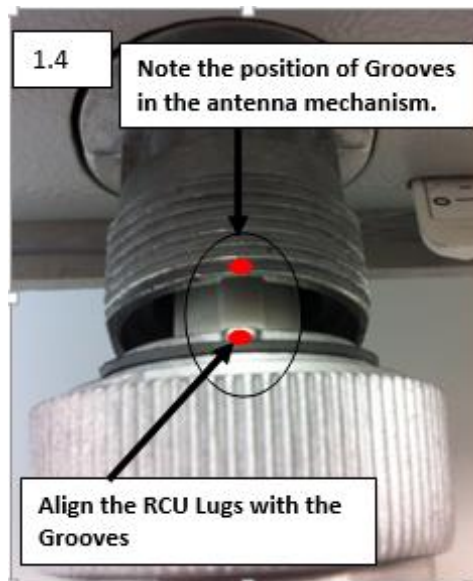
1.1 External RCU Should be orientated as shown below.



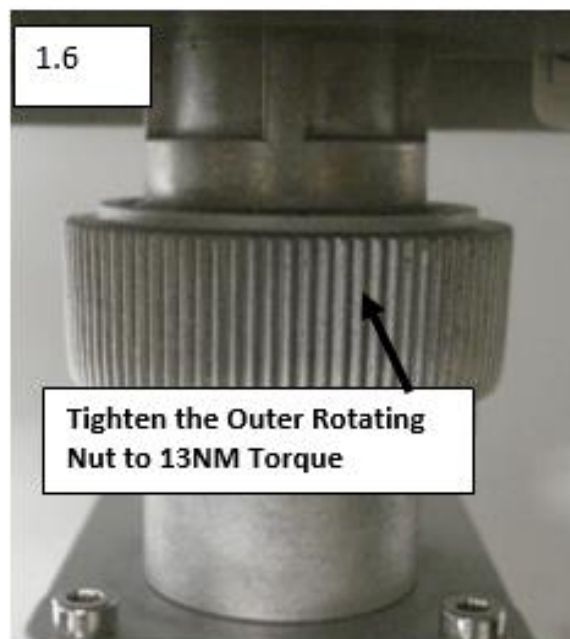
1.2 Insert the RCU 'Hex' shaft into the 'Hex' hole in the antenna mechanism,



- 1.3 Ensure the RCU has a Rubber Seal present.
- 1.4 Align RCU Lugs with Grooves in the antenna mechanism.

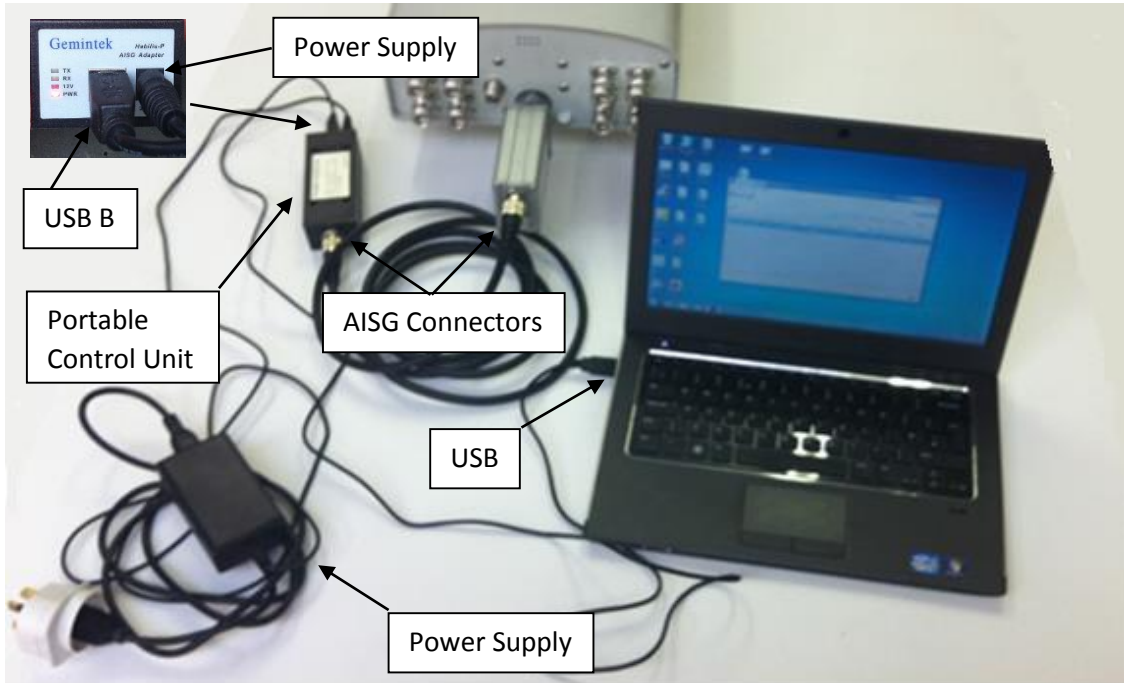


- 1.5 Push the RCU flush against the Tilt Mech so that the black Rubber Seal is evenly sandwiched between both parts all the way around.
- 1.6 Secure RCU in position using outer rotating nut.

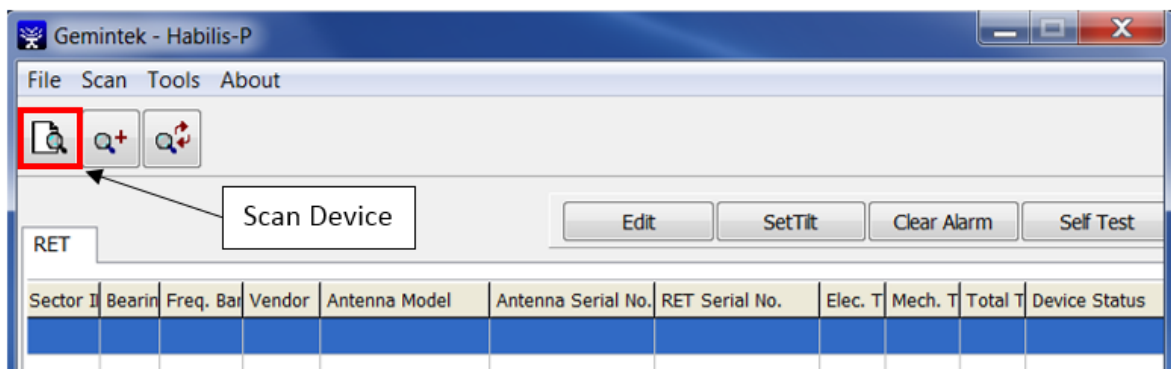


2. Calibrate the RCU to ensure correct installation

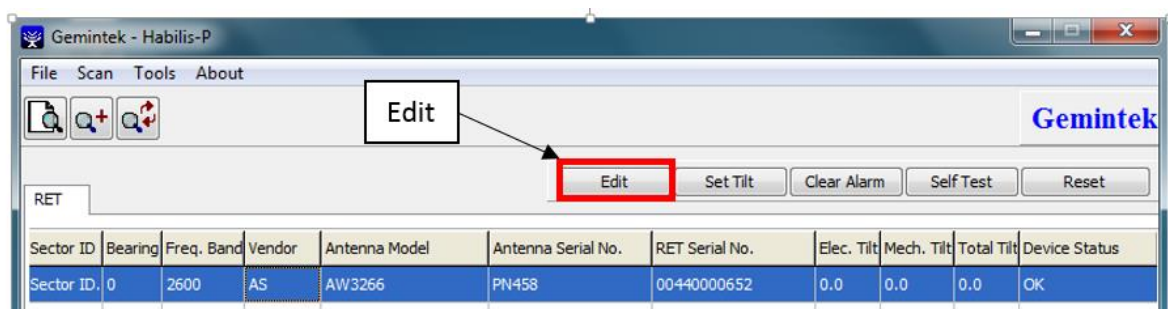
- 2.1 Install Habilis-P Software on a laptop
- 2.2 Connect the Portable Control Unit to the RCU and to the laptop and connect the power supply
- 2.3 Run Habilis-P Software



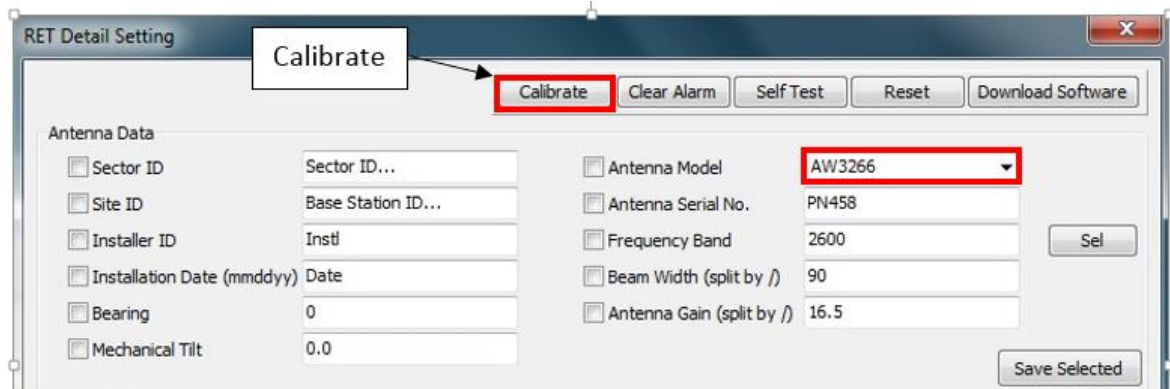
2.4 Click on the 'Scan Device' icon



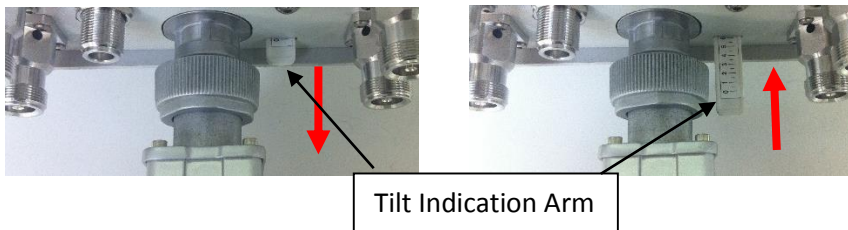
2.5 When the RCU is scans in click on the 'Edit' icon



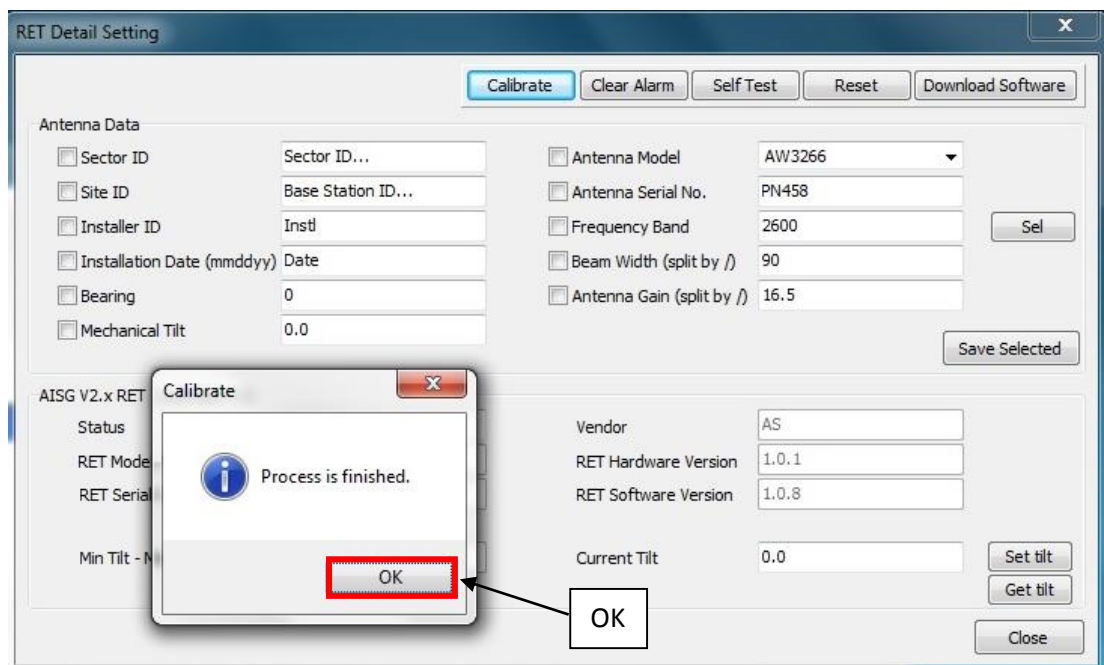
2.6 Check the Antenna Model and click on 'Calibrate'



- During the Calibration process, the Tilt Indication Arm moves in its full range.
- **If the Tilt Indication Arm does not move, the RCU is not connected properly. In this case remove the RCU and reconnect following the RCU Installation Instruction.**



2.7 When the Calibration process is complete, click 'OK'



2.8 RCU is now installed and ready to use. **Disconnect the RCU** from the portable control unit.