

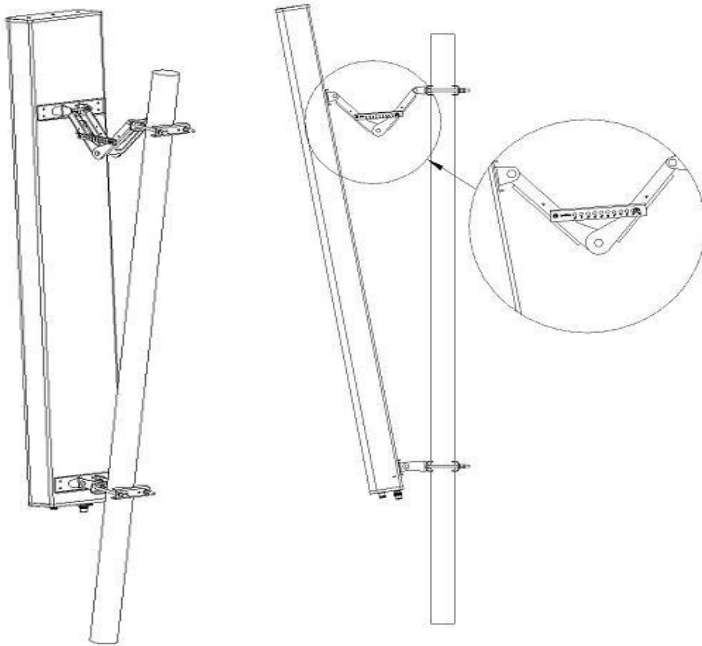
Nuts tightening force

Nut type	Torques	Wrench type
M8	16-22N.m	13mm
M10	32-40N.m	17mm
M12	57-75N.m	19mm

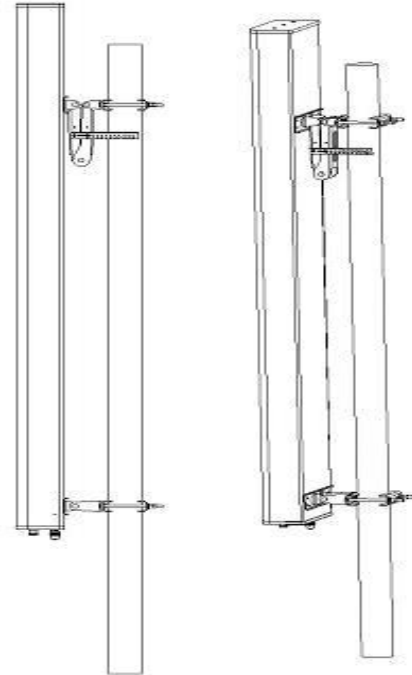
Nuts tightening force

Connector Type	Tightening torque
7-16 DIN	25-30N.m

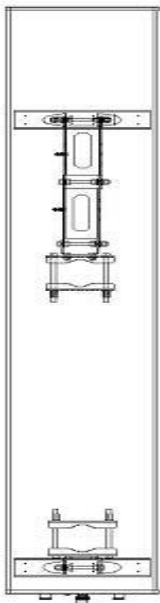
Antenna installation procedure



Adjust the downtilt angle to 0 degree.



Fix the antenna to the pole, fasten the nuts tightly



Adjust the downtilt angle to neet degree, then lock the bolt and fasten all the nuts tightly.

